

Features

- Dual input / single output
- Decoupling diodes for redundant applications
- Decouple power sources from each other or from load
- Usable for 10-60Vdc / 25A
- DIN Rail mountable
- IP20
- 3 year warranty



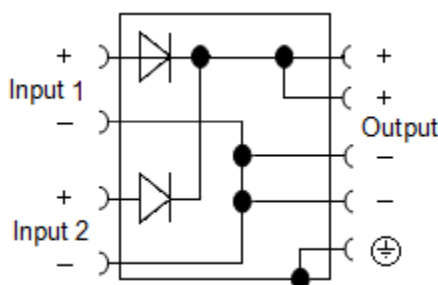
SPECIFICATIONS

| MR220 | |
|------------------------------------|--|
| Input | |
| Input 1 | 10 – 60Vdc, 0 – 25A |
| Input 2 | 10 – 60Vdc, 0 – 25A |
| Input current(Single) | 1 x 25A max. |
| Input current(Dual I/P mode) | 2 x 12.5A max (1 + 1 Redundancy) |
| Peak Current | 200A (max 10mS) |
| Reverse current | 25mA max. per diode |
| Output | |
| Output Voltage(Drop Out, Vin-Vout) | 0.9V max. (0-25A) |
| Rated current at 24V | 25A (@40°C, 22A @50 °C, 20A @ 60 °C |
| Short Circuit Current | 60A max |
| Dissipation power | 12W max. |
| Ambient | |
| Operating Temperature | -25 to + 70 °C (De-rate at 2.5% per °C above 60°C) |
| Storage Temperature | -40 to +85 °C |
| Humidity at 25 °C | 95% to 25 °C, non-condensing |
| General Data | |
| Fuse: I/P or O/P (Recommended) | 35A (MCB curve B) |
| Protection Class | IP20 |
| MTBF (IEC 61709) | >500,000 hours |
| Connections | Screw Terminal Block – 2.5mm (24-14 AWG) |
| Dimensions (L x W x H) | 120 x 50 x 50 mm (4.7 x 1.97 x 1.97") |
| Weight | 0.4kg~ |
| Cooling | Conventional cooling – no fan required (10mm free space all around device) |

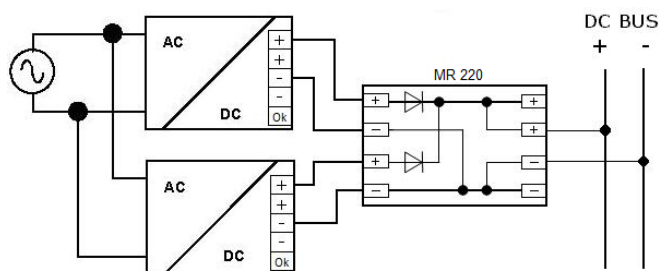


| Approvals | |
|----------------------|---|
| CE | The CE mark is in accordance with EMC 89/336/EEC and 93/68/EEC and the Low voltage directive 2006/95/EC. |
| Electrical Safety | Compliance to UL508. According to IEC/EN 60950 (VDE 0805) e EN 50178 (VDE 0160) for assembling device. The unit must be installed according to IEC/EN 60950. Input / Output separation: SELV EN60950-1 and PELV EN 60204-1. Double or reinforced insulation. |
| EMC Immunity | EN 61000-4-2, EN 61000-4-3, EN 61000-4-4, EN 61000-4-5, EN61000-6-2 |
| EMC Emission | EN61000-6-4, EN61000-3-2 |
| Standards Conformity | EN 60204-1 Safety of Electrical Equipment Machines |

Block Diagram



Wiring Schematic – Dual Input Mode (1+1 Redundancy)



Wiring Schematic – Single Input Mode

